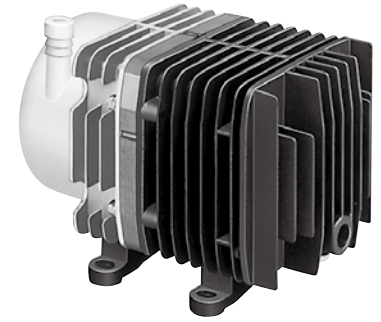


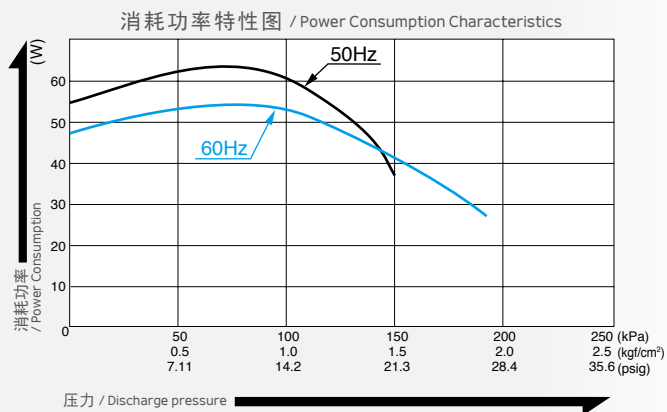
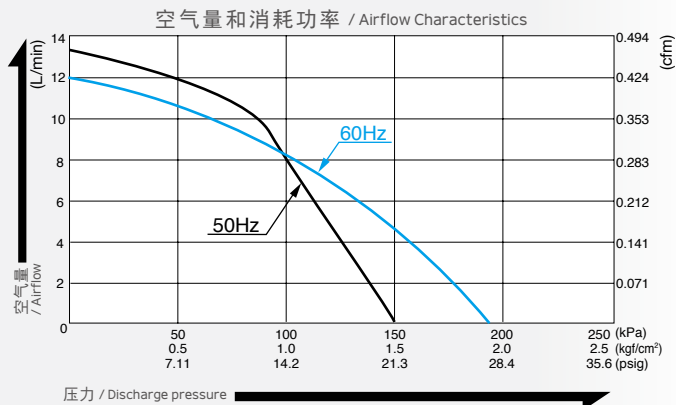
# 压缩泵 / Compressor



## 型式 AC0610



### 空气量特性图 / Airflow & Electric Current



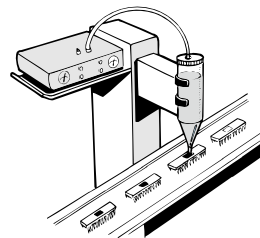
※ 特性图只是参考值，并不是保证值。  
/The characteristic charts are for reference only and are not guaranteed.

### 规格 / Specifications

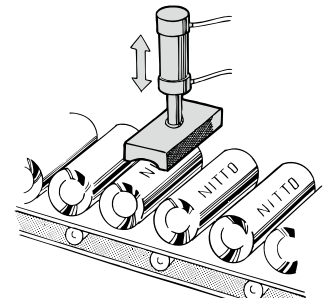
额定压力 / Rated Pressure	100 kPa (1.0 kgf/cm <sup>2</sup> ) 1.0 bar 14.2 psig	
吐出空气量 / Rated Airflow	8 L/min 0.283 cfm	
最高压力 / Maximum Pressure	150 kPa (1.5 kgf/cm <sup>2</sup> ) 1.5 bar 21.3 psig	
额定电压 / Rated Voltage	115 V AC	230 V AC
消耗功率 / Power Consumption	52 W	60 W
额定频率 / Rated Frequency	60 Hz	50 Hz
耐用时间 / Rated Performance	3,000 小时 / hours	
吐出口尺寸 / Outlet	ISO Rc 1/4 (内螺纹 / internal thread)	
额定时间 / Duty Cycle	连续 / Continuous	
线圈绝缘等级 / Coil Insulation Class	相当于 E 类, UL 规格品: 相当于 B 类 / E or its equivalent and B for UL	
安装尺寸 / Mounting Dimensions	68 (L) x 84 (W) mm 2-43/64" (L) x 3-5/16" (W)	
本体重量 / Weight	3.2 kg 7.1 Lbs	
导线长度 / Leadwire Length	200 mm 7-7/8"	

### 用途例 / Application Examples

自动点胶机 / Dispenser



自动压印机 / Automatic Stamper



### 外形及安装尺寸图 / Dimensional Outline Drawing (单位 / Unit : mm)

