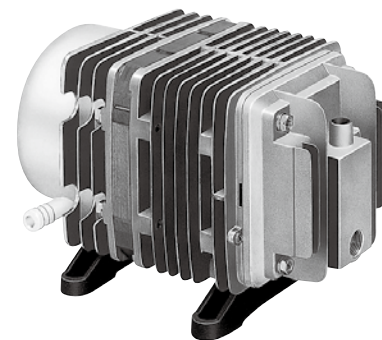
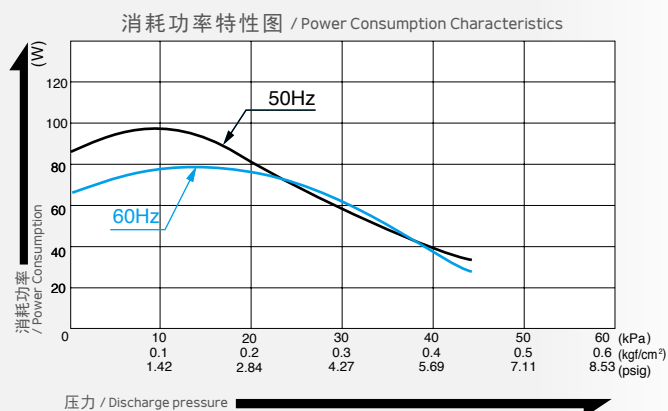
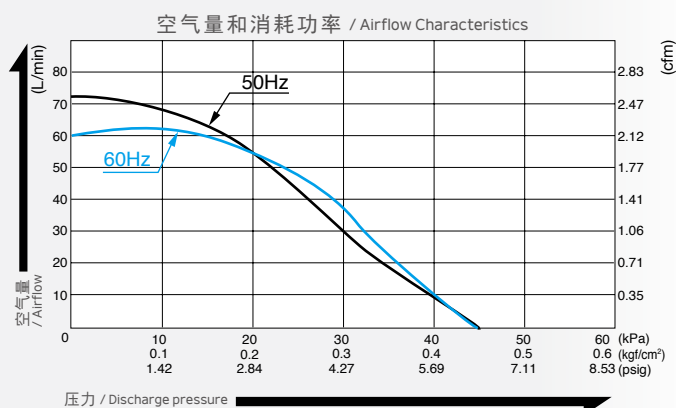


压缩泵 / Compressor

型式 AC0902



空气量特性图 / Airflow & Electric Current



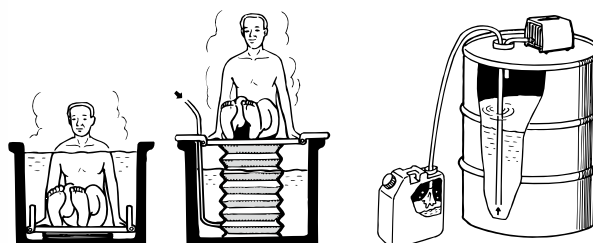
※ 特性图只是参考值，并不是保证值。
/The characteristic charts are for reference only and are not guaranteed.

规格 / Specifications

额定压力 / Rated Pressure	20 kPa (0.2 kgf/cm ²) 0.2 bar 2.84 psig		
吐出空气量 / Rated Airflow	55 L/min 1.94 cfm		
最高压力 / Maximum Pressure	45 kPa (0.45 kgf/cm ²) 0.45 bar 6.40 psig		
额定电压 / Rated Voltage	100 V AC	115 V AC	230 V AC
消耗功率 / Power Consumption	85 W / 75 W	75 W	85 W
额定频率 / Rated Frequency	50 Hz / 60 Hz	60 Hz	50 Hz
耐用时间 / Rated Performance	10,000 小时 / hours		
吐出口尺寸 / Outlet	ISO Rc 3/8 (内螺纹 / internal thread)		
额定时间 / Duty Cycle	连续 / Continuous		
线圈绝缘等级 / Coil Insulation Class	相当于 E 类, UL 规格品: 相当于 B 类 / E or its equivalent and B for UL		
安装尺寸 / Mounting Dimensions	102 (L) x 130 (W) mm 4-1/8" (L) x 5-1/8" (W)		
本体重量 / Weight	4.9 kg 10.8 Lbs		
导线长度 / Leadwire Length	300 mm 11-13/16"	300 mm 11-13/16"	320 mm 12-19/32"

用途例 / Application Examples

浴缸用空气提升器 / Air Lifter for Bathtub 液体压送 / Liquid Dispenser



外形及安装尺寸图 / Dimensional Outline Drawing (单位 / Unit : mm)

