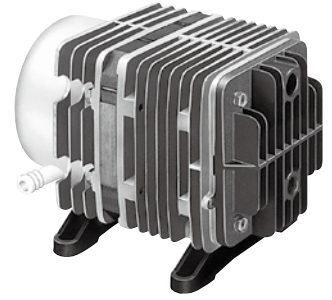


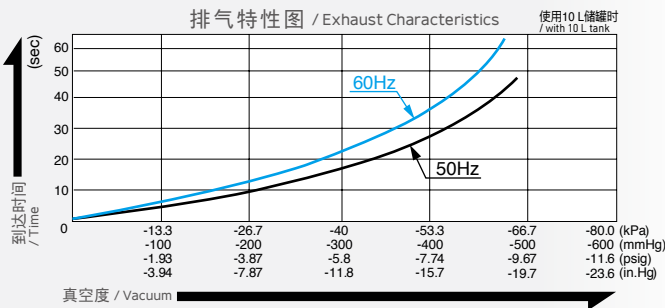
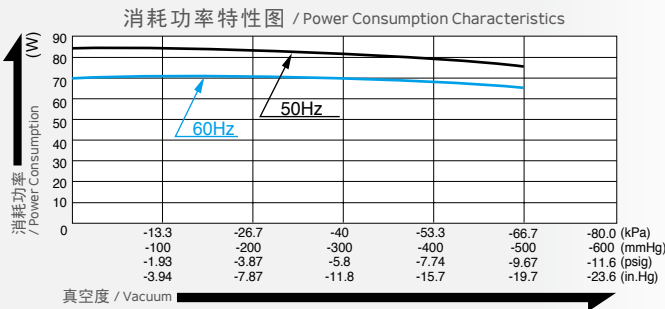
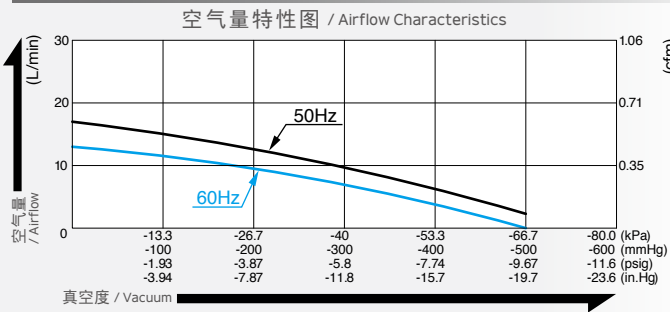
# 真空泵 / Vacuum Pump

## 型式 VP0945

定制 / is made to order



### 空气量和消耗功率 / Airflow & Electric Current



※ 特性图只是参考值，并不是保证值。  
/The characteristic charts are for reference only and are not guaranteed.

### 规格 / Specifications

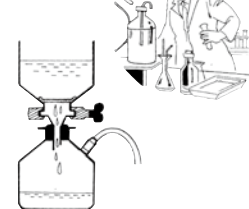
达到真空度* / Attainable Vacuum	-60 kPa (-450 mmHg) -600 mbar -17.7 in. Hg		
吐出空气量 / Free Air Displacement	12 L/min 0.42 cfm		
额定电压 / Rated Voltage	100 V AC	115 V AC	230 V AC
消耗功率 / Power Consumption	85 W / 70 W	70 W	85 W
额定频率 / Rated Frequency	50 Hz / 60 Hz	60 Hz	50 Hz
耐用时间 / Rated Performance	3,000 小时 / hours		
吸入口尺寸 / Inlet	φ15 mm (外径) 软管接头 / 15 mm O.D. hose barb		
吐出口尺寸 / Outlet	ISO Rc 1/4 (内螺纹) / internal thread		
额定时间 / Duty Cycle	连续 / Continuous		
线圈绝缘等级 / Coil Insulation Class	相当于 E 类 / E or its equivalent		
安装尺寸 / Mounting Dimensions	102 (L) x 130 (W) mm 4-1/64" (L) x 5-1/8" (W)		
本体重量 / Weight	4.9 kg 10.8 Lbs		
导线长度 / Leadwire Length	300 mm 11-13/16"	320 mm 12-19/32"	

※ 高于 -60 kPa 运转时需要在进气管路上加装一个放气阀或泄压阀。  
/ Operations at higher than -60kPa need an additional leak valve or relief valve on the inlet piping.

### 用途例 / Application Examples

#### 用途例 (VP0645)

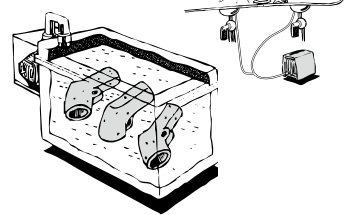
液体净化 / Liquid Purification



#### 用途例 (VP0945)

真空吸附台钳 / Vacuum Vice

浸渍减压器 / Impregnation Depressurizer



### 外形及安装尺寸图 / Dimensional Outline Drawing (单位 / Unit : mm)

