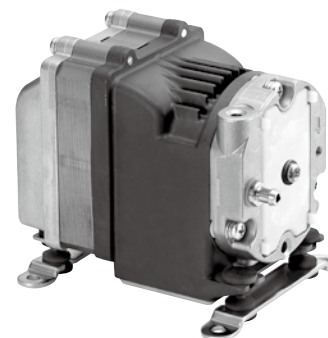


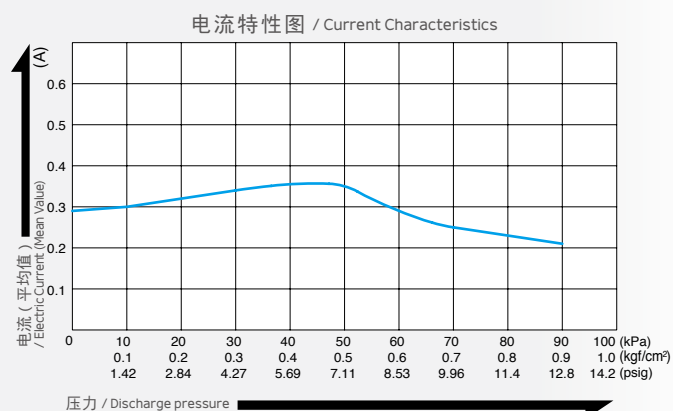
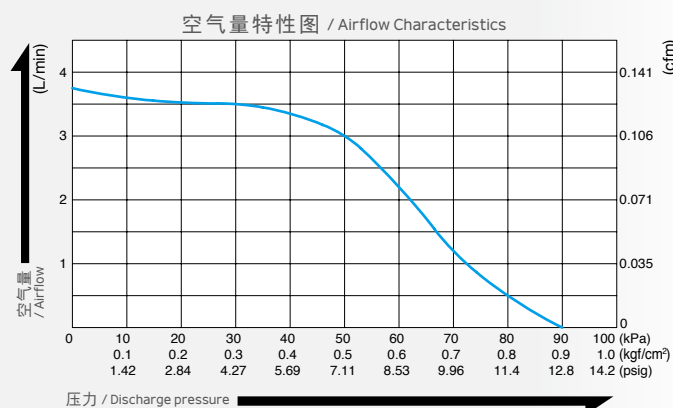
压缩泵 / Compressor

型式 DAH105-Y1

24 V DC



空气量和电流 / Airflow & Power Consumption



※ 特性图只是参考值，并不是保证值。
/The characteristic charts are for reference only and are not guaranteed.

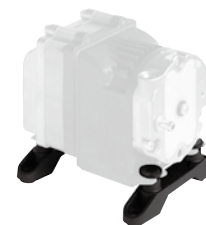
规格 / Specifications

额定压力 / Rated Pressure	50 kPa (0.5 kgf/cm ²) 0.5 bar 7.11 psig
吐出空气量 / Rated Airflow	2.5 L/min * 0.088 cfm
最高压力 / Maximum Pressure	80 kPa (0.8 kgf/cm ²) 0.8 bar 11.4 psig
额定电压 / Rated Voltage	24 V DC
电流 (平均值) / Current (Mean Value)	0.35 A
耐用时间 (MTTF) / Rated Performance (MTTF)	10,000 小时 / hours
吐出口尺寸 / Outlet	φ6 mm (外径) 软管接头 / 6mm O.D. hose barb
额定时间 / Duty Cycle	连续 / Continuous
线圈绝缘等级 / Coil Insulation Class	相当于 A 类 / A or its equivalent
安装尺寸 / Mounting Dimensions	76 (L) x 70 (W) mm 2-63/64" (L) x 2-3/4" (W)
本体重量 / Weight	0.91 kg 2.01 Lbs
导线长度 / Leadwire Length	300 mm 11-13/16"

※ 额定压力下的空气量。 / Airflow at rated pressure.

可选附件 / Optional Accessory (LB07793)

如有需要，可提供重载橡胶脚垫。
/ Heavy duty rubber feet available on request.



用途例 / Application Examples

医疗设备、分析仪等
/ Medical equipment, analyzers, etc.

外形及安装尺寸图 / Dimensional Outline Drawing (单位 / Unit : mm)

