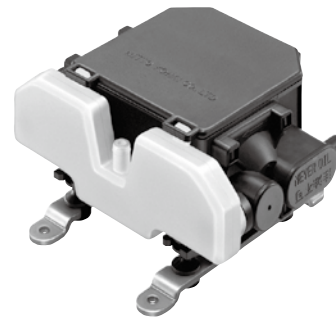


压缩泵 & 真空泵 / Compressor and Vacuum Pump

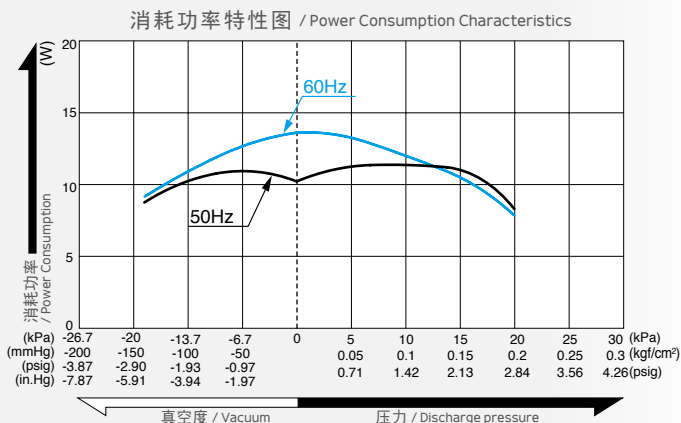
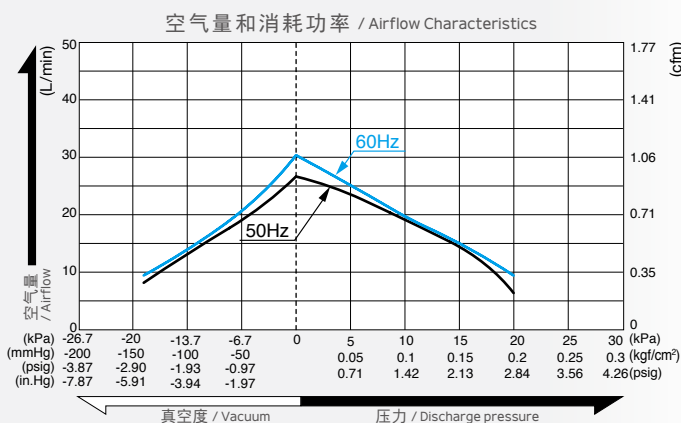
型式 VC0101E

定制 / is made to order



兼用 / Dual Type

空气量和消耗功率 / Airflow & Electric Current



* 特性图只是参考值，并不是保证值。
/The characteristic charts are for reference only and are not guaranteed.

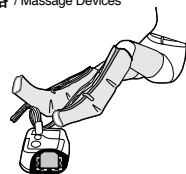
规格 / Specifications

额定压力 / Rated Pressure	10 kPa (0.1 kgf/cm ²) 0.1 bar 1.42 psig		
吐出空气量 / Rated Airflow	15 L/min 0.53 cfm		
最高压力 / Maximum Pressure	20 kPa (0.2 kgf/cm ²) 0.2 bar 2.84 psig		
达到真空度 / Attainable Vacuum	-18.7 kPa (-140 mmHg) -186 mbar -5.51 in.Hg		
额定电压 / Rated Voltage	100 V AC	120 V AC	230 V AC
消耗功率 / Power Consumption	11.5 W		
额定频率 / Rated Frequency	50 Hz / 60 Hz	60 Hz	50 Hz
耐用时间 / Rated Performance	5,000 小时 / hours		
使用压力范围 / Working Pressure Range	-18.7 kPa ~ 20 kPa (-140 mmHg ~ 0.2 kgf/cm ²) -187 mbar ~ 0.2 bar -5.51 in.Hg ~ 2.84 psig		
吸入口尺寸 / Inlet	φ7.5 mm (外径) 软管接头 / 7.5 mm O.D. hose barb		
吐出口尺寸 / Outlet	φ7.5 mm (外径) 软管接头 / 7.5 mm O.D. hose barb		
额定时间 / Duty Cycle	连续 / Continuous		
线圈绝缘等级 / Coil Insulation Class	相当于 E 类 / E or its equivalent		
安装尺寸 / Mounting Dimensions	66 (L) x 100 (W) mm 2-19/32" (L) x 3-15/16" (W)		
本体重量 / Weight	0.82 kg 1.81 Lbs		
导线长度 / Leadwire Length	300 mm 11-13/16"		

120 V UL 认证的，如需要可以提供。 / A UL approved model for 120V is available upon request.

用途例 / Application Examples

按摩器 / Massage Devices



防褥疮垫 / Bedsores Prevention Mattress



外形及安装尺寸图 / Dimensional Outline Drawing (单位 / Unit : mm)

