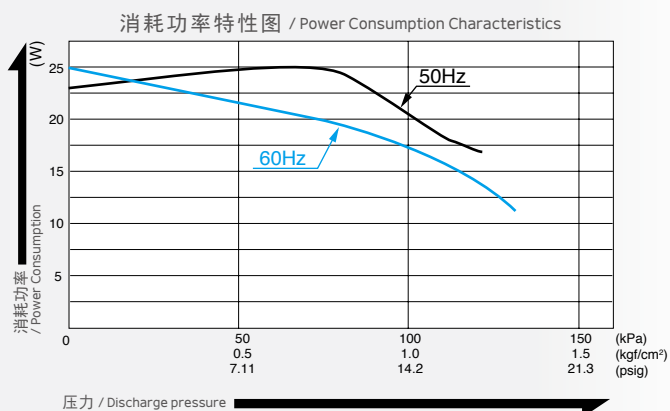
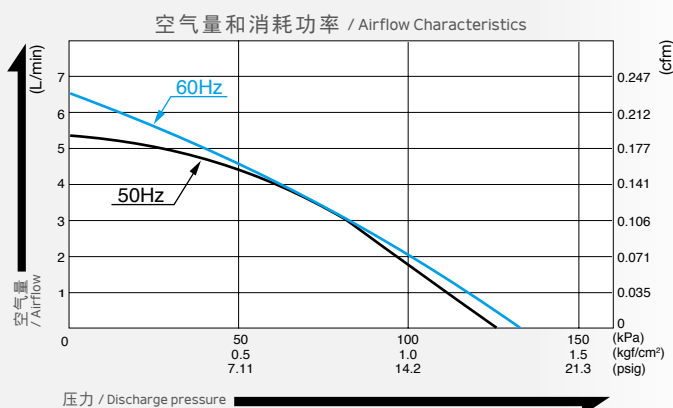


压缩泵 / Compressor

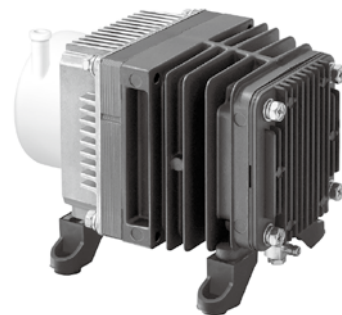
型式 ACO207



空气量特性图 / Airflow & Electric Current



※ 特性图只是参考值，并不是保证值。
/The characteristic charts are for reference only and are not guaranteed.

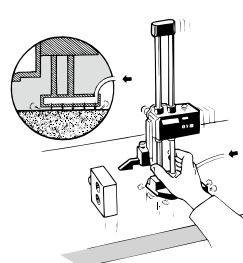


规格 / Specifications

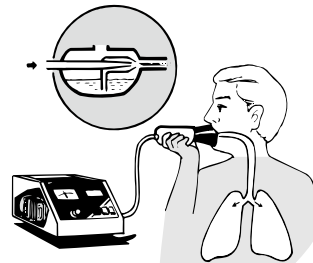
额定压力 / Rated Pressure	70 kPa (0.7 kgf/cm ²) 0.7 bar 9.96 psig		
吐出空气量 / Rated Airflow	3.5 L/min 0.124 cfm		
最高压力 / Maximum Pressure	100 kPa (1.0 kgf/cm ²) 1.0 bar 14.2 psig		
额定电压 / Rated Voltage	100 V AC	115 V AC	230 V AC
消耗功率 / Power Consumption	25 W / 20 W	20 W	25 W
额定频率 / Rated Frequency	50 Hz / 60 Hz	60 Hz	50 Hz
耐用时间 / Rated Performance	3,000 小时 / hours		
吐出出口尺寸 / Outlet	φ4.7 mm (外径) 软管接头 / 6mm O.D. hose barb		
额定时间 / Duty Cycle	连续 / Continuous		
线圈绝缘等级 / Coil Insulation Class	相当于 E 类, UL 规格品: 相当于 B 类 / E or its equivalent and B for UL		
安装尺寸 / Mounting Dimensions	75 (L) x 88 (W) mm 2-61/64" (L) x 3-15/32" (W)		
本体重量 / Weight	1.7 kg 3.7 Lbs		
导线长度 / Leadwire Length	200 mm 7-7/8"		

用途例 / Application Examples

气浮式精密测量仪
/ Air Bearing for Precision Machines



雾化器 / Nebulizer



外形及安装尺寸图 / Dimensional Outline Drawing (单位 / Unit : mm)

