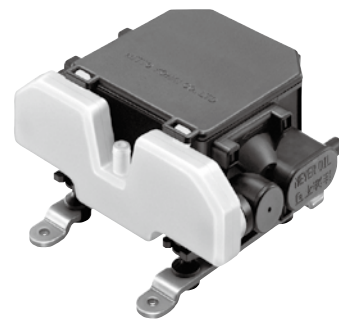


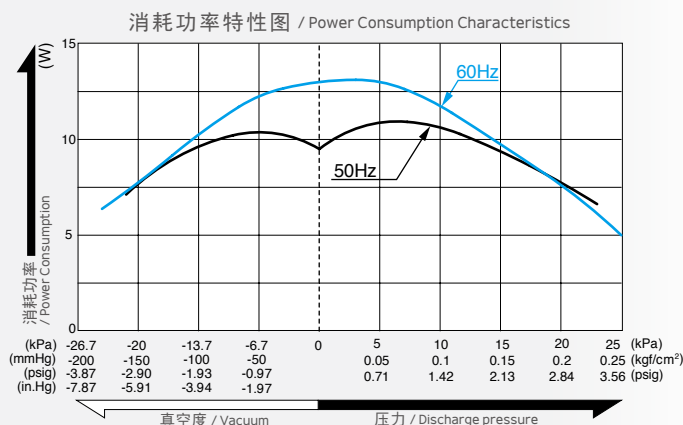
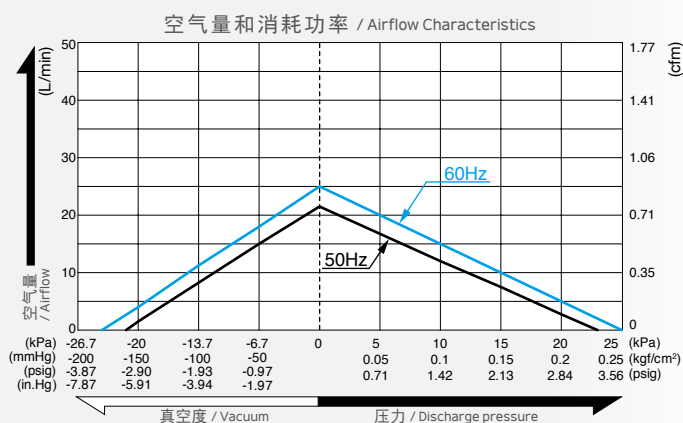
压缩泵 & 真空泵 / Compressor and Vacuum Pump

型式 VC0101



兼用 / Dual Type

空气量和消耗功率 / Airflow & Electric Current



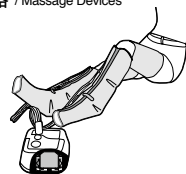
※ 特性图只是参考值，并不是保证值。
/The characteristic charts are for reference only and are not guaranteed.

规格 / Specifications

额定压力 / Rated Pressure	10 kPa (0.1 kgf/cm ²) 0.1 bar 1.42 psig		
吐出空气量 / Rated Airflow	10 L/min 0.35 cfm		
额定电压 / Rated Voltage	100 V AC	120 V AC	230 V AC
最高压力 / Maximum Pressure	18 kPa (0.18 kgf/cm ²) 0.18 bar 2.56 psig	15 kPa (0.15 kgf/cm ²) 0.15 bar 2.13 psig	
达到真空度 / Attainable Vacuum	-18.7 kPa (-140 mmHg) -187 mbar -5.51 in.Hg	-10 kPa (-76 mmHg) -100 mbar -2.95 in.Hg	
使用压力范围 / Working Pressure Range	-18.7 kPa ~ 18 kPa (-140 mmHg ~ 0.18 kgf/cm ²) -187 mbar ~ 0.18 bar -5.51 in.Hg ~ 2.56 psig	-10 kPa ~ 15 kPa (-76 mmHg ~ 0.15 kgf/cm ²) -100 mbar ~ 0.15 bar -2.95 in.Hg ~ 2.13 psig	
消耗功率 / Power Consumption	11 W		
额定频率 / Rated Frequency	50 Hz / 60 Hz	60 Hz	50 Hz
耐用时间 / Rated Performance	5,000 小时 / hours		
吸入口尺寸 / Inlet	φ7.5 mm (外径) 软管接头 / 7.5 mm O.D. hose barb		
吐出口尺寸 / Outlet	φ7.5 mm (外径) 软管接头 / 7.5 mm O.D. hose barb		
额定时间 / Duty Cycle	连续 / Continuous		
线圈绝缘等级 / Coil Insulation Class	100 V: 相当于 B 类 B for 100V or its equivalent	120 V: 相当于 B 类 B for 120V or its equivalent	230 V: 相当于 B 类 B for 230V or its equivalent
安装尺寸 / Mounting Dimensions	66 (L) x 100 (W) mm 2-19/32" (L) x 2-15/16" (W)		
本体重量 / Weight	0.82 kg 1.81 Lbs		
导线长度 / Leadwire Length	200 mm 11-13/16"		

用途例 / Application Examples

按摩器 / Massage Devices



防褥疮垫 / Bedsores Prevention Mattress



外形及安装尺寸图 / Dimensional Outline Drawing (单位 / Unit : mm)

