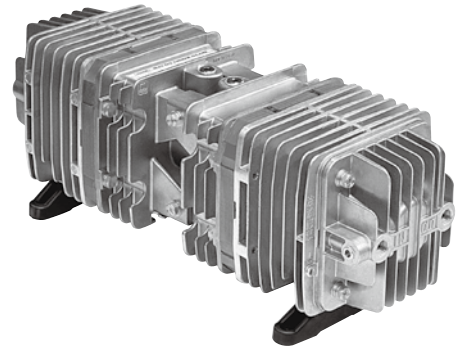


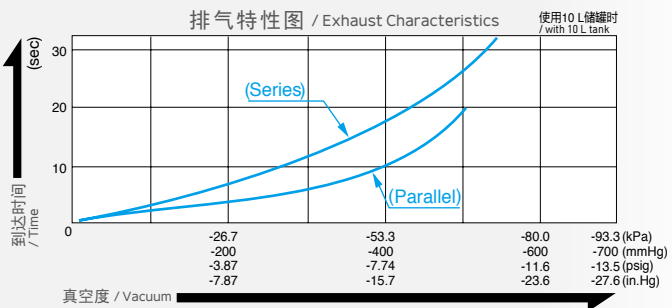
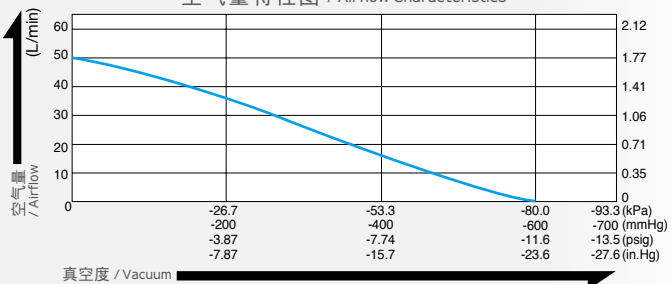
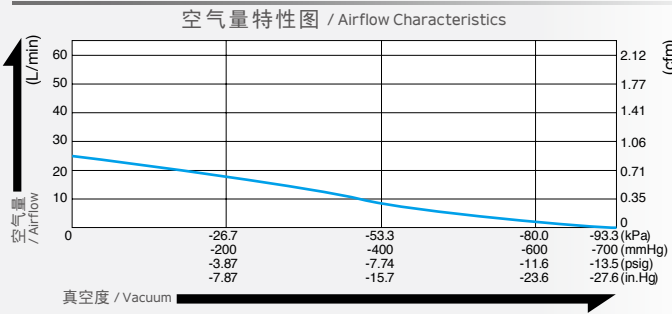
# 真空泵 / Vacuum Pump



## 型式 VP0660x2

120 V/230 V 定制 / is made to order

### 空气量和消耗功率 / Airflow & Electric Current



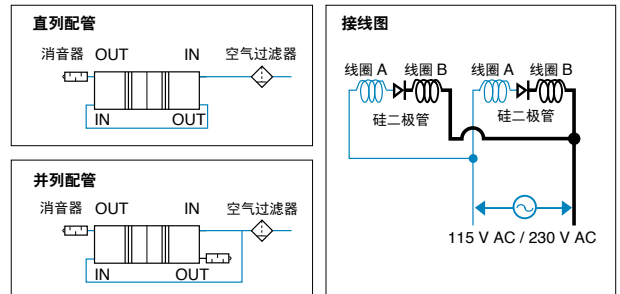
※ 特性图只是参考值，并不是保证值。  
/ The characteristic charts are for reference only and are not guaranteed.

### 规格 / Specifications

达到真空度 * / Attainable Vacuum	直列配管 / Series Connection	-93.3 kPa (-700 mmHg) -933 mbar -27.6 in. Hg	并列配管 / Parallel Connection	-80 kPa (-600 mmHg) -800 mbar -23.6 in. Hg
吐出空气量 / Free Air Displacement		25 L/min 0.88 cfm		50 L/min 1.77 cfm
耐用时间 / Rated Performance	6,000 小时 / hours			
额定电压 / Rated Voltage	100 V AC	115 V AC	230 V AC	
消耗功率 / Power Consumption	100 W / 125 W	125 W	100 W	
额定频率 / Rated Frequency	50 Hz / 60 Hz	60 Hz	50 Hz	
吸入口尺寸 / Inlet	ISO Rc 1/4 (内螺纹 / internal thread), 2 端口 / 2 ports			
吐出口尺寸 / Outlet	ISO Rc 1/4 (内螺纹 / internal thread), 2 端口 / 2 ports			
额定时间 / Duty Cycle	连续 / Continuous			
线圈绝缘等级 / Coil Insulation Class	相当于 B 类 / B or its equivalent			
安装尺寸 / Mounting Dimensions	280 (L) x 130 (W) mm 11-1/32" (L) x 5-1/8" (W)			
本体重量 / Weight	10 kg 22 Lbs			
导线长度 / Leadwire Length	150 mm 5-7/8"	150 mm 5-7/8"	600 mm 23-5/8"	

※ 高于 -93.3 kPa (直列配管) 或 -80 kPa (并列配管) 运转时需要进气管路上加装一个放气阀或泄压阀。  
/ Operations at higher than -93.3kPa in series or -80kPa in parallel need an additional leak valve or relief valve on the inlet piping.

### 用途例 / Application Examples



\* 空气管路连接需由用户进行。

### 外形及安装尺寸图 / Dimensional Outline Drawing (单位 / Unit : mm)

